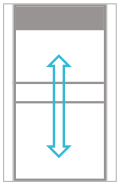


More room for working safely



Tall apparatus needs a lot of space. Distillation and walk-in fume cupboards are ideal in this regard. Distillation fume cupboards feature an especially low worktop, while walk-in fume cupboards provide enough room for large apparatus. Now also available with particularly large depths of 1200 and 1500mm.

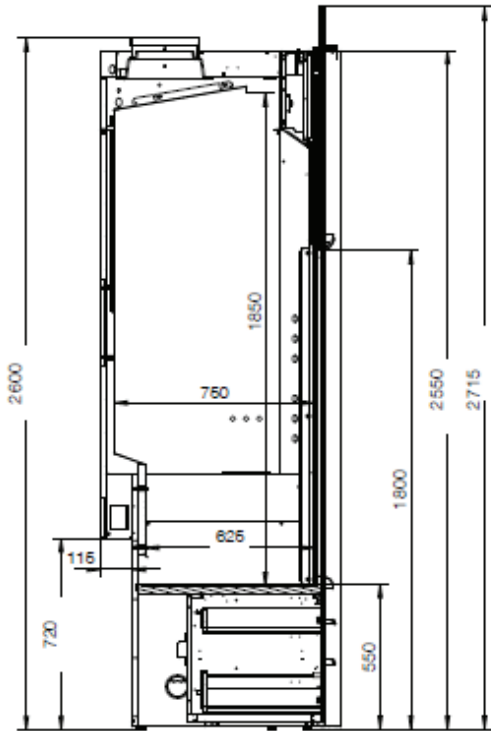


More room for working safely

- ✓ Higher interior for especially large apparatus, for example for distillation or preparative column chromatography
- ✓ Two-part sash with two panes of laminated safety glass, end-to-end glazed or with a sliding pane



Distillation fume cupboard

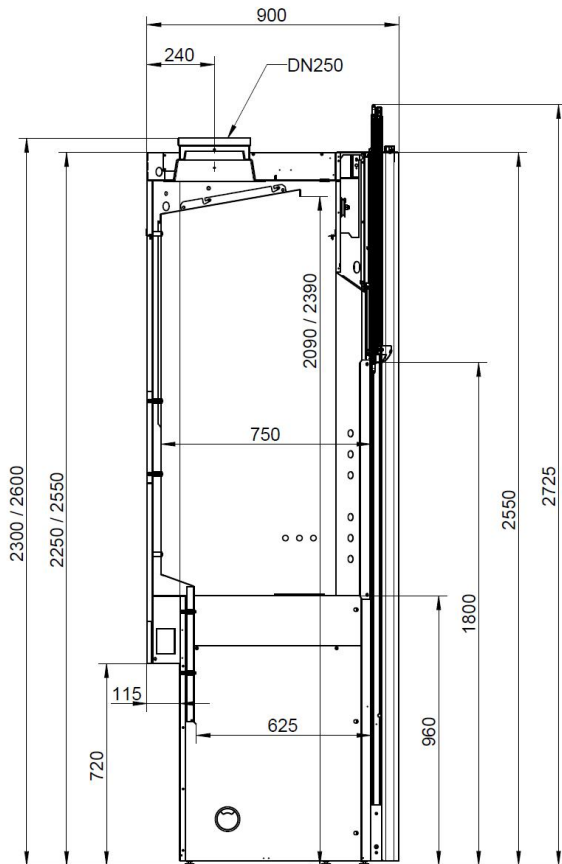


Width	1200	1500	1800	2000	2100
Front height	2550	2550	2550	2550	2550
Chamber height	2600	2600	2600	2600	2600
Depth	900	900	900	900	900
Usable space width	910 / 1100	1210 / 1400	1510 / 1700	1710 / 1900	1810 / 2000
Usable space height	1850	1850	1850	1850	1850
Usable space depth	625 / 750	625 / 750	625 / 750	625 / 750	625 / 750
Work height	550	550	550	550	550
Minimal permissible volume flow rate**	600	750	900	1050	1050
Specified volume flow rate	630	790	950	1110	1110
Maximum permissible volume flow rate	1500	1500	1500	1500	1500

Dimensions [mm] / Volume flow rate [m³/h]

** Alarm value

Walk-in fume cupboard - depths 900 mm

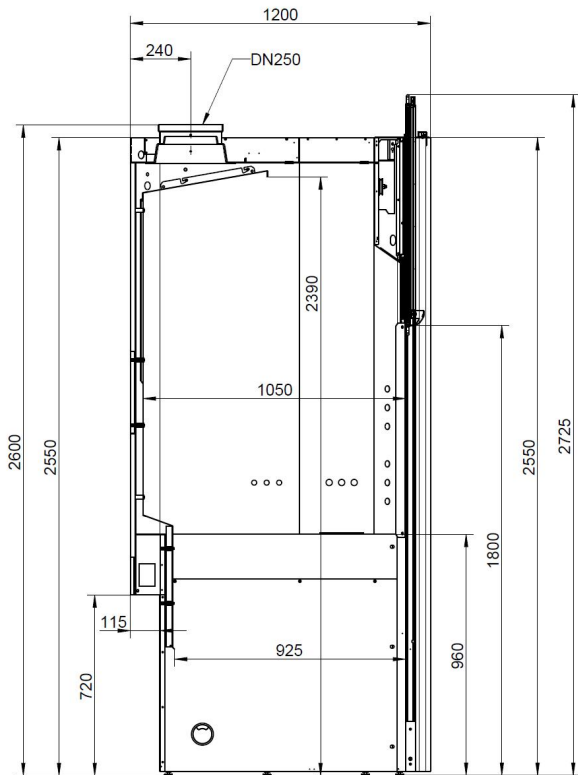


Width	1200	1500	1800	2000	2100
Front height	2550	2550	2550	2550	2550
Chamber height	2250 / 2550	2250 / 2550	2250 / 2550	2250 / 2550	2250 / 2550
Depth	900	900	900	900	900
Usable space width	910 / 1100	1210 / 1400	1510 / 1700	1710 / 1900	1810 / 2000
Usable space height	2090 / 2390	2090 / 2390	2090 / 2390	2090 / 2390	2090 / 2390
Usable space depth	625 / 750	625 / 750	625 / 750	625 / 750	625 / 750
Minimal permissible volume flow rate**	660	830	990	1160	1160
Specified volume flow rate	750	940	1120	1310	1310
Maximum permissible volume flow rate	2000	2000	2000	2000	2000

Dimensions [mm] / Volume flow rate [m³/h]

** Alarm value

Walk-in fume cupboard - depth 1200 mm

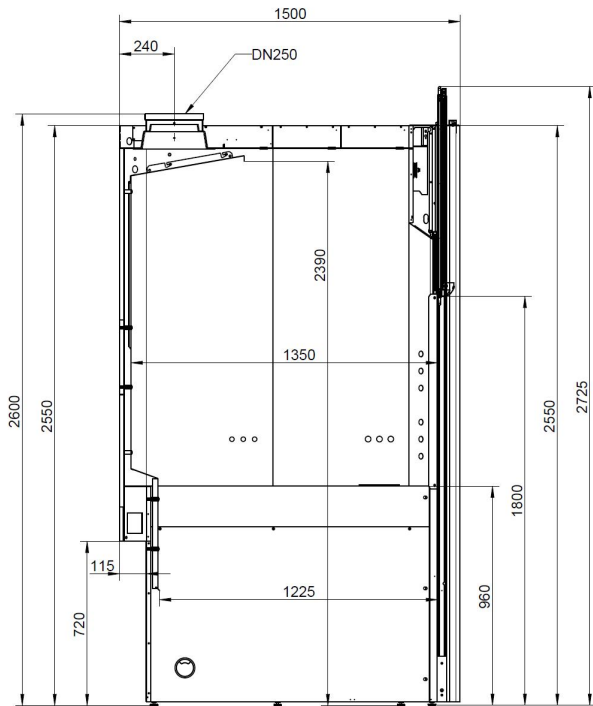


Width	1200	1500	1800	2000	2100
Front height	2550	2550	2550	2550	2550
Chamber height	2550	2550	2550	2550	2550
Depth	1200	1200	1200	1200	1200
Usable space width	910 / 1100	1210 / 1400	1510 / 1700	1710 / 1900	1810 / 2000
Usable space height	2390	2390	2390	2390	2390
Usable space depth	925 / 1050	925 / 1050	925 / 1050	925 / 1050	925 / 1050
Minimal permissible volume flow rate**	720	900	1080	1260	1260
Specified volume flow rate	780	980	1170	1370	1370
Maximum permissible volume flow rate	2000	2000	2000	2000	2000

Dimensions [mm] / Volume flow rate [m³/h]

** Alarm value

Walk-in fume cupboard - depth 1500 mm

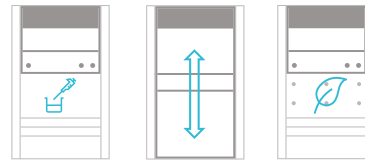


Width	1200	1500	1800	2000	2100
Front height	2550	2550	2550	2550	2550
Chamber height	2550	2550	2550	2550	2550
Depth	1500	1500	1500	1500	1500
Usable space width	910 / 1100	1210 / 1400	1510 / 1700	1710 / 1900	1810 / 2000
Usable space height	2390	2390	2390	2390	2390
Usable space depth	1225 / 1350	1225 / 1350	1225 / 1350	1225 / 1350	1225 / 1350
Minimal permissible volume flow rate**	740	960	1170	1390	1390
Specified volume flow rate	810	1050	1280	1520	1520
Maximum permissible volume flow rate	2000	2000	2000	2000	2000

Dimensions [mm] / Volume flow rate [m³/h]

** Alarm value

Fume cupboards for general use



	Suitable	Occasional use	Not suitable
Organic solvents	x		
Weak acids	x		
Diluted inorganic acids	x		
Cold concentrated inorganic acids		x	
Hot concentrated inorganic acids			x
Hydrofluoric acid			x
Radioactive substances			x
High thermal load			x

When selecting a fume cupboard, the most important considerations are the activities you do and the substances you use.