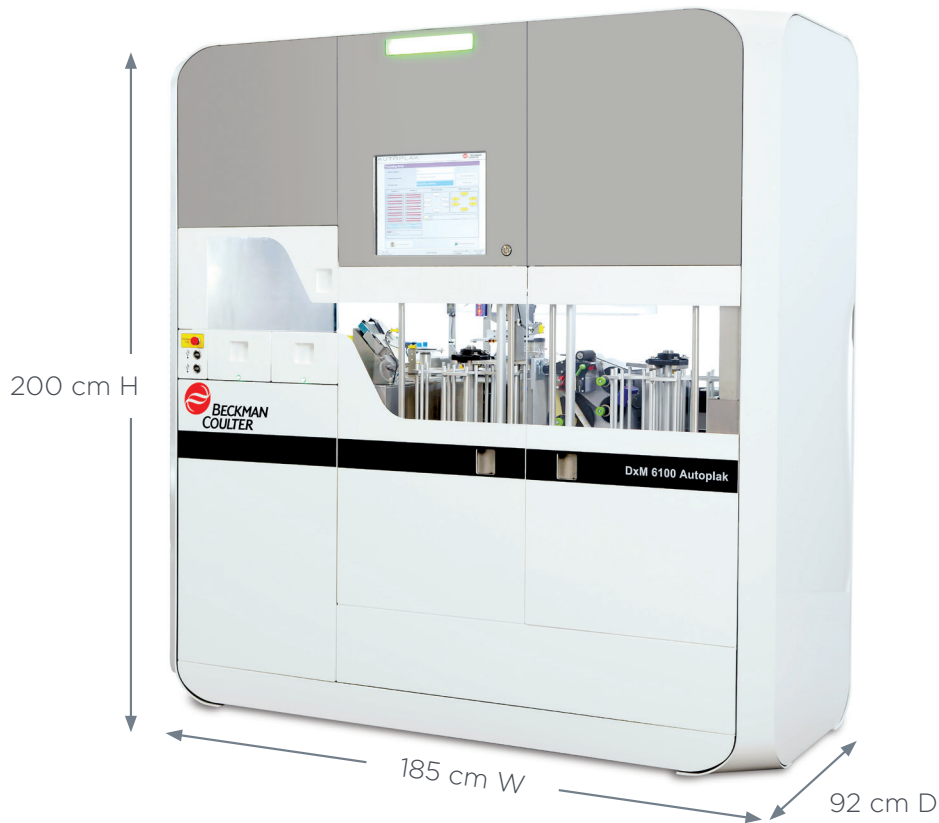


DxM 6100 Autoplak

TECHNICAL SPECIFICATIONS AND REQUIREMENTS



Physical

Dimensions	200 cm H x 185 cm W x 92 cm D
Weight	500 kg (approximate)

Power requirements

Line voltage	220–240V Single Phase AC, 1500 W
Line frequency	50/60 Hz
Line current	10A for 200–240 VAC operation
IP CEI 60529 degree of protection (For indoor use only)	IP 20
Noise level	LpA ≤ 65 dB (A)
Average power	600 VA
Peak power	1,100 VA
Power plug	Type E+F (CEE 7/7)



Required laboratory environmental conditions

Temperature (operating)	Ambient: 15° to 30° C (59° to 86° F) Operating: 10° to 26° C (50° to 78.8° F)
Temperature (storage)	-10° to 40° C (14° to 104° F)
Relative humidity	40% to 80% (without condensation)

Light source

Lamp specification	19.2 W flexible cool white light LED strips (550–6500 K)
--------------------	--

Performance

Capacity in number of dishes	480 dishes
Capacity in number of test tubes	120 tubes
Processing capacity (average per hour)	125 dishes/hour
Culture media	A maximum of 11 different culture media

General features

Degree of pollution	II
Maximum operating altitude	1500 m
Installation category	II

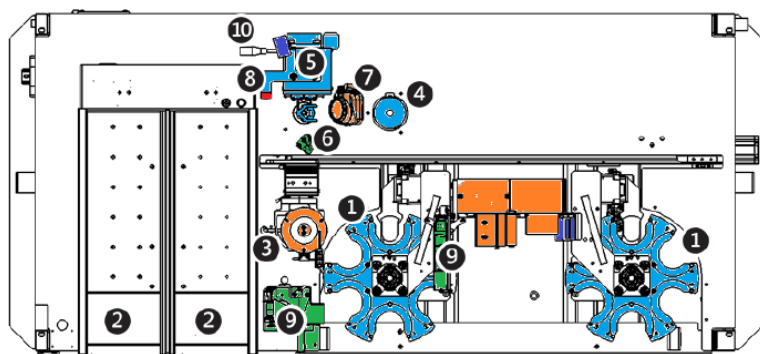
Operator interface

Operator interface	Front panel controls and pop-up keyboard
--------------------	--

Barcode

Default barcode	Code 128
Standard bar codes accepted on test tubes for insertion of samples	EAN/UPC, Code 39, Code 32, Code 128, GS1-1 28, ISBT 128, Interleaved and Standard 2 of 5, Codabar, ABC Codabar, GS1, Databar (Omnidirectional, limited, Expanded), Code 93, Code 11 and MSI The barcode printed on petri dishes is CODEBAR.

DxM 6100 Autoplak TECHNICAL SPECIFICATIONS AND REQUIREMENTS





DxM 6000 Autoplak Complete components:

1	2 Carousels	To load and unload the solid media. Accessible through side-opening of two access doors
2	2 independent drawer doors	To load and unload sample tubes and the enrichment media tubes on racks
3	Inoculation Table	Where the plate will be streaked
4	Incinerator	Infrared heater to sterilize the inoculation loops
5	Agitator / Agitator grippers	To hold the tube and agitate the sample to homogenize it
6 7	Drop projector LED and camera	To verify the inoculation loop is filled with sample
8	Liquid level sensor	
9	1 Printer	To print label on plate
10	Barcode reader	To read the bar codes of the selected sample tube for traceability
11	HEPA filter	To provide a safe-working environment
12	Touch screen monitor	With included software
13	UPS	To provide emergency power

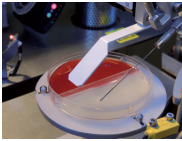
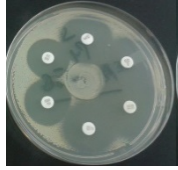
DxM 6100 Autoplak Advanced components:

The DxM 6100 Autoplak Advanced System includes the same components as DxM AUTOPLAK COMPLETE system as well as these additional features:

	Gram slide preparation module	To extend Gram slides with barcode printing on the slides
	Enrichment broth inoculation module	To inoculate enrichment broth with barcode printing on the tube
9	3 Printers	2 additional printers to print bar codes on the enrichment broth tubes and on the gram slide dishes

DxM Autoplak Systems optional modules (sold separately):

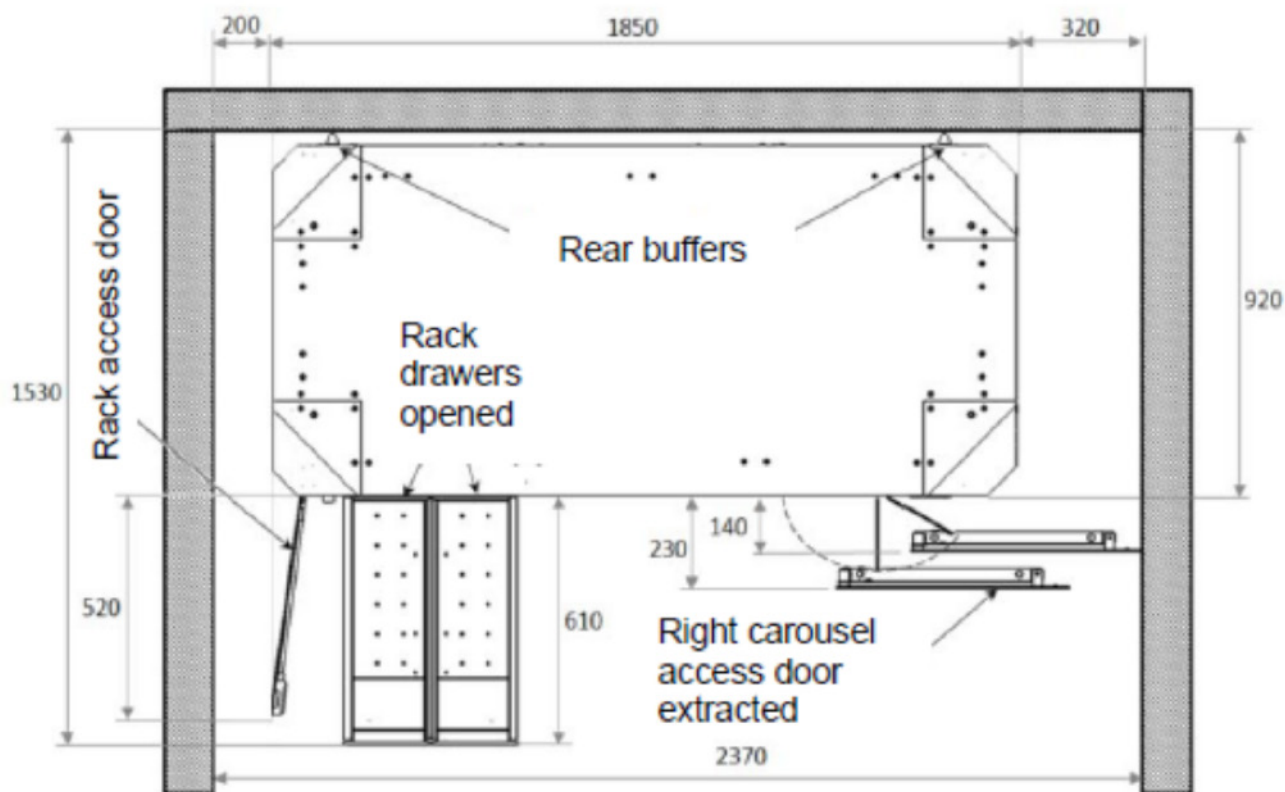
Optional modules include:

	Bi-plate module	To automatically streak bi-plates
	Disk diffusion test dispenser module	To automatically apply antibiotic discs. The instrument labels plates and places them in the output column

Standard items included with the instrument (Start-up kit)

Description	Quantity
Racks	12
1µl Loop	4
10µl Loop	4
3 turn Loop	10
4 turn Loop	10
Loop positioning tool	1
Roll of labels (installed)	1
Ribbon roll (installed)	1

Instrument component dimensions

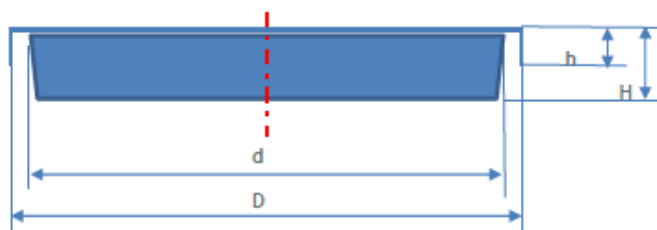


All dimensions are measured in mm.

DxM Autoplak media plate and specimen container

Media plate specifications

Base Diameter	Cover Diameter
$87 \text{ mm} < D < 88 \text{ mm}$	$(d + 2 \text{ mm}) < D < (d + 5.5 \text{ mm})$, subject to the following condition: $(91 \leq D \leq 92)$
Cover height	Dish height
$6 \text{ mm} < H < 8 \text{ mm}$	$14 \text{ mm} < H < 15.2 \text{ mm}$



Specimen container specifications

Material	Plastic
Types	<ul style="list-style-type: none"> › Tubes with screw caps › Tubes with solid pressure cap › Tubes with hollow pressure cap › Vacuum tubes
Lower extremity shapes	<ul style="list-style-type: none"> Cylindrical tip with a diameter of <13 mm › Hemispherical tip › Conical tip with a diameter >15mm and the length of the cone is <12 mm
Tube dimensions	<p>Height (including cap) must be between 82 mm and 125 mm</p> <ul style="list-style-type: none"> › Diameter must be between 12.50 mm and 15.75 mm with the following restrictions: <ul style="list-style-type: none"> - If the height is >100 mm, the diameter must be >14.00 mm - If the height is >110 mm, the diameter must be >15.50 mm